

quick start guide

powerwise



Powerwise quick start guide

Powerwise 2011 (version 2.1) - document revision 9

Copyright © modus interactive limited 2011

All rights reserved.

No part of this document shall be reproduced, copied, transmitted by any means, without permission of modus interactive limited.

Whilst all precautions have been taken in the creation of this user guide, modus interactive limited assume no responsibility for errors or omissions, neither is liability assumed for damages resulting from the information contained.

Trademarks

Microsoft, Windows Vista, Windows XP, Windows 2008, Windows 2003, Windows 2000 are all trademarks of Microsoft Corporation in the United States and other countries.



Contents

Introduction	3
Who is the guide for.....	3
Before you begin.....	3
Requirements.....	3
The Server	3
Workstation	4
Security	4
Installing Powerwise Server	4
Web Activation.....	6
Installing the Powerwise Agent	7



Introduction

Powerwise can reduce energy usage, help save the environment, and save you money. Powerwise does this by ensuring your computers are in the correct power state at any time of the day or night.

Powerwise will automatically turn on your computers when they are required by learning when a computer is turned on each day, and will then ensure the computers are powered down later based on inactivity and/or time of day and day of the week.

To begin benefitting from Powerwise you will need to follow these three simple steps:

- 1 Install Powerwise on your server.
- 2 Configure your Powerwise Profiles.
- 3 Install the Powerwise Agent on the computers you want to manage.

Who is the guide for

This document is intended as a guide to assist administrators with the installation of Powerwise. Once the server is installed you will also need the Powerwise User Guide. It is assumed that readers of this guide will have a good basic knowledge of Microsoft Operating Systems (both server and workstation), and PC power management.

Before you begin

Before you start ensure you have the following:

- Powerwise software
- A license key
- Computer on which to install Powerwise Server
- Admin rights to install the software

Requirements

Powerwise is made up of three components; the Server, Client, and Agent, and has been designed as a low impact, small foot print solution. There are no specific hardware requirements for installing Powerwise, assuming at least the recommended specification for each of the supported operating systems is met.

The Server

The Powerwise Server is the hub of the system, holding various configuration data, storing power usage statistics, and managing the communications between the Server and Agents. The Powerwise Server runs as a Windows service and is supported on Microsoft Windows Server 2003 and 2008.



The Powerwise Client provides the administration interfaces for Powerwise. These are split into Server Manager and Powerwise Management Console. Server Manager is used for Server configuration and maintenance such as licensing, and the Powerwise Management Console is used for day to day management such as configuring Powerwise Profiles, and running tasks. Both Server Manager and the Powerwise Management Console are applications installed on the Powerwise server as part of the default installation, however they can be installed and run from anywhere on the network.

Workstation

The Powerwise Agent must be installed on each computer where you want to control power management. There is no user interface other than configuration through a Control Panel applet. The Powerwise Agent runs as a Windows service and can be installed on the following workstation operating systems:

- Microsoft Windows 7
- Microsoft Windows Vista
- Microsoft Windows XP
- Microsoft Windows 2000 (SP4)

In order for Agent computers to 'wakeup' their BIOS must support and be configured to use either Wake-On-LAN or Intel vPro.

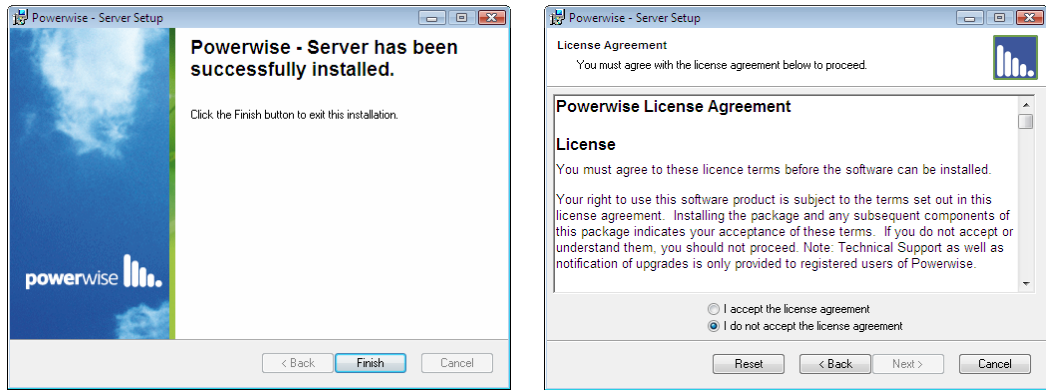
Security

It is recommended that Powerwise is installed on a server within an Active Directory environment in order to take advantage of the integrated security. Powerwise will, however function perfectly well in a workgroup environment. If you wish to take advantage of the integrated security you will need to decide before installation, as the installation process automatically creates a domain service account for Powerwise.

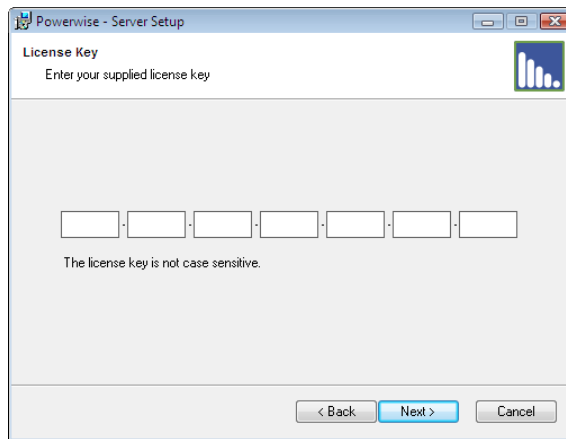
Installing Powerwise Server

You will need to be logged on to your selected Powerwise server machine with Domain Admin main privileges, or with a local administrator account if installing on a standalone server (Workgroup).

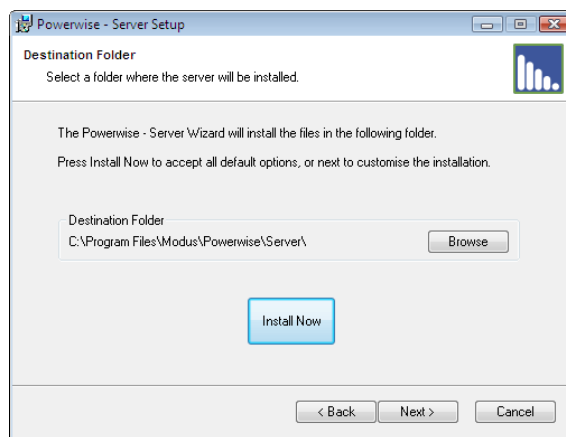
- 1 If you are running the installation from media then follow the auto run menu to start the Powerwise server installation. If you have downloaded Powerwise then copy PowerwiseSetup.exe to the server and run it.
- 2 The Server Installation Wizard will start. Click **Next** and then review and accept the License agreement before clicking **Next** to continue.



- 3 You will now have to enter the License Key. If you downloaded Powerwise the key will have been emailed to you. If you have box product then you will find the License Key located on the back page of the Powerwise User Guide. Click **Next** to continue.



- 4 If required you can now change the folder where Powerwise will be installed. Once you have changed it, or left the default click on **Install Now**.



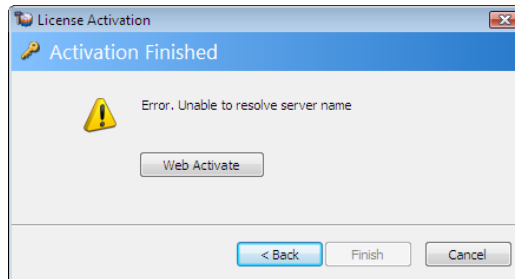
- 5 The Powerwise installation will now run. After a short period of time the License Activation will start. This connects to the modus license activation system over the internet.



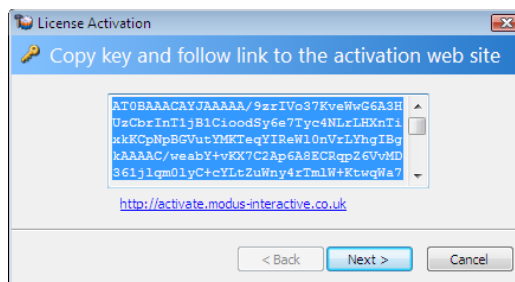
If the activation fails skip to the next section; Web Activation

If Powerwise fails to contact the activation server, you can use the Web Activate process. If during the server installation your license activation was successful then skip this section.

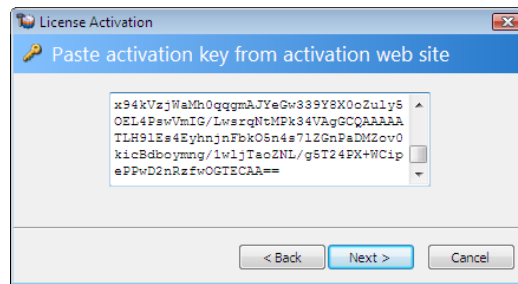
- 1 When you get an error dialog similar to the one below click on **Web Activate**.



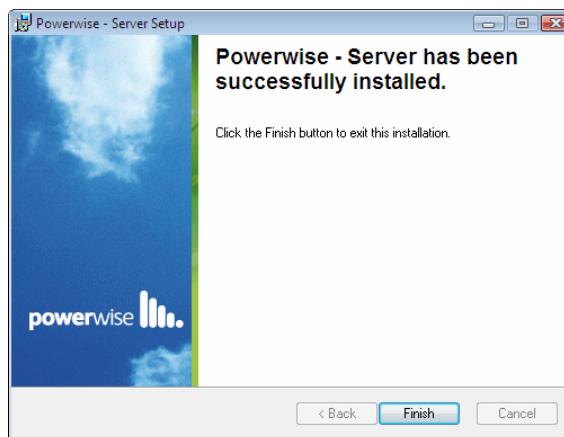
- 2 A key string will then be generated which you will need to copy to the clipboard or to a notepad file.



- 3 Once you have copied the key string **click on the URL link**. Do **NOT** press **Next** at this time.
- 4 Your browser will connect to modus and start the Web Activate process.
- 5 Within your browser click **Next** on the Welcome Page.
- 6 At the License Key page you will need to paste in the key string you copied in step 2 and then click on **Next**.
- 7 As the original activation failed you will need to click on **Back** on the Error page.
- 8 Complete each field on the Registration details page and click on **Next**.
- 9 You will now see the Complete page with another key string. Please copy this key string to the clipboard or to a notepad file and close the browser.
- 10 Go back to the License Activation wizard and click on **Next**.
- 11 You will now be prompted to paste the new activation key string into the dialog as shown below. You can then click on **Next**.



- 12 The License Activation process is now complete.
- 13 .
- 14 You will now be prompted to complete your registration details then click **Next**.
- 15 Click **Finish** to complete the License Activation.
- 16 The installation will complete and the Powerwise Management Console will now load.
- 17 The Powerwise Server Installation wizard is now complete and you can switch to it and click on **Finish**.

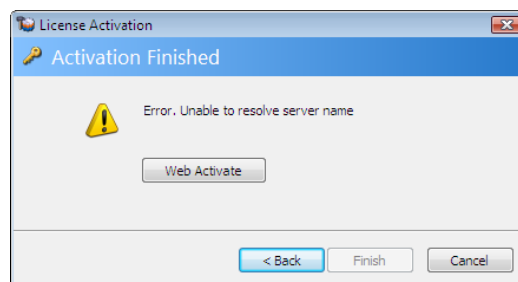


You can now skip the next section.

Web Activation

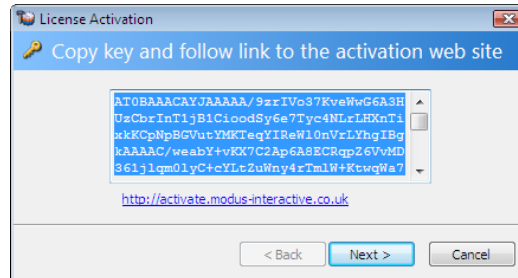
If Powerwise fails to contact the activation server, you can use the Web Activate process. If during the server installation your license activation was successful then skip this section.

- 18 When you get an error dialog similar to the one below click on **Web Activate**.

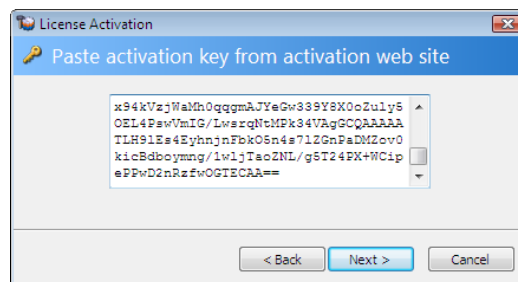




- 19 A key string will then be generated which you will need to copy to the clipboard or to a notepad file.



- 20 Once you have copied the key string **click on the URL link**. Do **NOT** press **Next** at this time.
- 21 Your browser will connect to modus and start the Web Activate process.
- 22 Within your browser click **Next** on the Welcome Page.
- 23 At the License Key page you will need to paste in the key string you copied in step 2 and then click on **Next**.
- 24 As the original activation failed you will need to click on **Back** on the Error page.
- 25 Complete each field on the Registration details page and click on **Next**.
- 26 You will now see the Complete page with another key string. Please copy this key string to the clipboard or to a notepad file and close the browser.
- 27 Go back to the License Activation wizard and click on **Next**.
- 28 You will now be prompted to paste the new activation key string into the dialog as shown below. You can then click on **Next**.



- 29 The License Activation process is now complete.

If you cannot use a browser from your server then you can activate the license after the installation is complete; you have 3 days to do this. To activate the license key after the server installation, see the Advanced Management and Configuration section in the Powerwise User Guide.



Installing the Powerwise Agent

In order for a computer to be controlled by Powerwise the Agent must be installed. Once the Agent is installed it will immediately attempt to connect to the server. By default the server will assign the 'Default' Powerwise Profile to any new 'Managed' computers. For more information on configuring and managing Powerwise Profiles please refer to the Powerwise User Guide.

There are several techniques which can be used for installing the Powerwise Agent throughout an organisation, from a web page driven manual installation, through to support for fully automated enterprise management tools. For more information on the different techniques please refer to the Powerwise User Guide.

To install the Agent using the Powerwise web console:

- 1 On the target computer(s) login with a local admin account
- 2 Open a browser and go to the address `http://<servername>:2248`
- 3 From the Powerwise web console click on **Install Powerwise Agent**
- 4 When prompted click on **Run**, and then click on **Run** again at the Security Warning dialog
- 5 Now follow the Agent Installation Wizard; click **Next**
- 6 Accept the License Agreement and click **Next**
- 7 Enter your server name and click **Next**
- 8 Click **Next** and the Agent will install
- 9 When the installation completes click on **Finish**
- 10 The Agent will automatically start and connect to the server. Load the Powerwise Management Console on the server to check that the computer is listed and shows as Online.